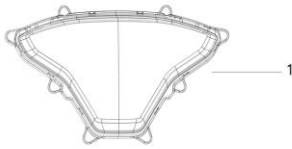
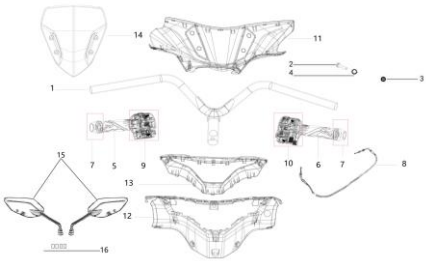


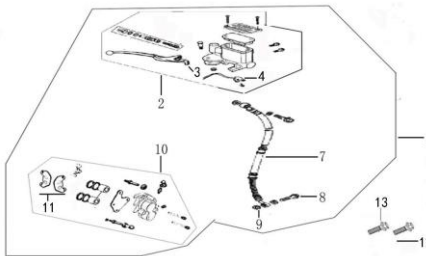
Parts No.	Description	Qty per Vehicle
PMZ150-3-A-1	Headlights	1



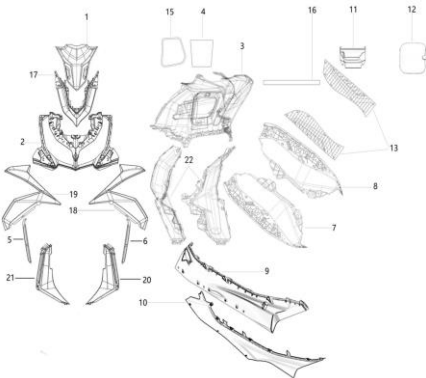
Parts No.	Description	Qty per Vehicle
PMZ150-3-B-1	Instrument	1



Parts No.	Description	Qty per Vehicle
PMZ150-3-C-1	Direction handle	1
PMZ150-3-C-2	BOLT FLANGE 10*50	1
PMZ150-3-C-3	NUT U FLANGE 10MM	1
PMZ150-3-C-4	COLLAR HANDLE SET	1
PMZ150-3-C-5	THE SET OF LEFT HAND BLACK	1
PMZ150-3-C-6	COME ON HAND TO SET BLACK	1
PMZ150-3-C-7	HANDLE BALANCER	2
PMZ150-3-C-8	Throttle line 1	1
PMZ150-3-C-9	SW ASSY LH HNDL	1
PMZ150-3-C-10	SW ASSY RH HNDL	1
PMZ150-3-C-11	hood	1
PMZ150-3-C-12	instrument under cover	1
PMZ150-3-C-13	meter top cover	1
PMZ150-3-C-14	windscreen	1
PMZ150-3-C-15	REAR VIEW MIRROR	1SET
PMZ150-3-C-16	Front windshield mounting rubber plug	4

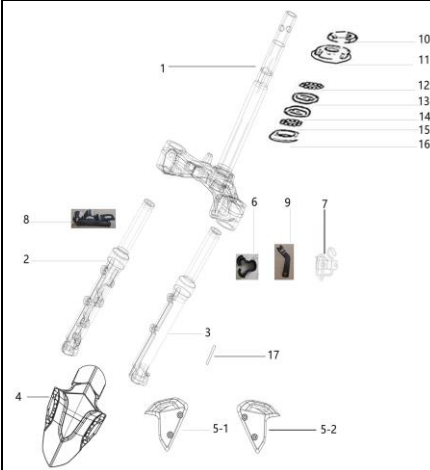


Parts No.	Description	Qty per Vehicle
PMZ150-3-D-1	SUB HARNESS SET FR M/C COMP	1
PMZ150-3-D-2	SUB HARNESS SET FR M/C	1
PMZ150-3-D-3	HANDLE R	1
PMZ150-3-D-4	SHUT-OFF BLOCK CONSTITUTE FR	1
PMZ150-3-D-7	HOSE ASSY FR BRK	1
PMZ150-3-D-8	OIL BOLT 10*22	2
PMZ150-3-D-9	WASHER OIL BOLT	4
PMZ150-3-D-10	CALIPER ASSY FR	1
PMZ150-3-D-11	Front disc brake pump brake pad	1SET
PMZ150-3-D-12	BOLT FLANGE 8*32	1
PMZ150-3-D-13	BOLT FLANGE 8*32	1

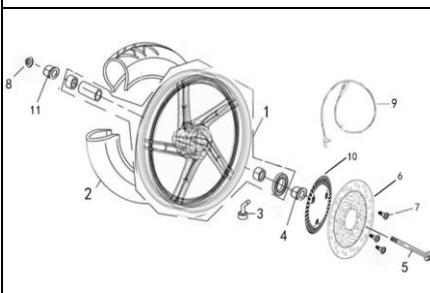


Parts No.	Description	Qty per Vehicle
PMZ150-3-E-1	Front panel (panel center cover)	1
PMZ150-3-E-2	Front headlight frame	1
PMZ150-3-E-3	front compartment	1
PMZ150-3-E-4	glove compartment lid	1
PMZ150-3-E-5	Left side cover trim	1
PMZ150-3-E-6	Right side cover trim	1
PMZ150-3-E-7	left foot pedal	1
PMZ150-3-E-8	right foot pedal	1
PMZ150-3-E-9	right side cover	1
PMZ150-3-E-10	lift side cover	1
PMZ150-3-E-11	battery cap	1
PMZ150-3-E-12	idle maintenance cover	1
PMZ150-3-E-13	pedal leather	1SET
PMZ150-3-E-15	glove compartment cover rubber strip	1
PMZ150-3-E-16	glove compartment rubber strip	1
PMZ150-3-E-17grey	Front panel trim	1
PMZ150-3-E-17yellow	Front panel trim	1
PMZ150-3-E-17white	Front panel trim	1
PMZ150-3-E-18grey	Right side cover (upper part of right front wall)	1
PMZ150-3-E-18dark grey	Right side cover (upper part of right front wall)	1
PMZ150-3-E-18white	Right side cover (upper part of right front wall)	1
PMZ150-3-E-19grey	Left side cover (upper part of left front wall)	1
PMZ150-3-E-19dark grey	Left side cover (upper part of left front wall)	1
PMZ150-3-E-19white	Left side cover (upper part of left front wall)	1
PMZ150-3-E-20grey	Lower part of right cover (lower part of right front wall)	1
PMZ150-3-E-20dark grey	Lower part of right cover (lower part of right front wall)	1
PMZ150-3-E-20white	Lower part of right cover (lower part of right front wall)	1

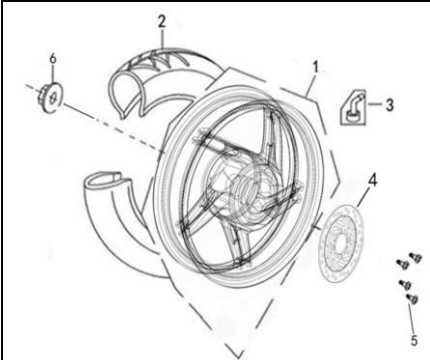
PMZ150-3-E-21grey	Lower part of left cover (lower part of left front wall)	1
PMZ150-3-E-21dark grey	Lower part of left cover (lower part of left front wall)	1
PMZ150-3-E-21white	Lower part of left cover (lower part of left front wall)	1
PMZ150-3-E-22	front lining trim board	1SET



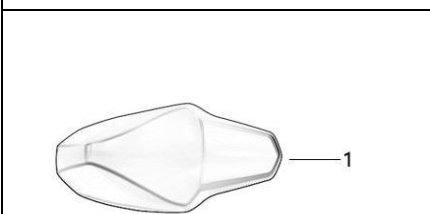
Parts No.	Description	Qty per Vehicel
PMZ150-3-F-1	Lower connection board	1
PMZ150-3-F-2	CUSHION ASSY FR L	1
PMZ150-3-F-3	CUSHION ASSY FR R	1
PMZ150-3-F-4	front fender	1
PMZ150-3-F-5-1	Left side cover, front fender	1
PMZ150-3-F-5-2	Right side cover, front fender	1
PMZ150-3-F-6	3-hole disc brake Nylon clamp	3
PMZ150-3-F-7	Direction front bracket (faucet wire clamp)	1
PMZ150-3-F-8	Warship linkage clamp	2
PMZ150-3-F-9	Dual throttle line clamp rear disc brake line clamp 2	1
PMZ150-3-F-10	The main rod locking nut	1
PMZ150-3-F-11	Adjusting nut	1
PMZ150-3-F-12	BALL STEEL UP	1
PMZ150-3-F-13	RACE UP STRG BALL	1
PMZ150-3-F-14	RACE (STRG BOT) BALL	1
PMZ150-3-F-15	BALL STEEL DOWN	1
PMZ150-3-F-16	RACE (STRG BOTTOM) CONE	1
PMZ150-3-F-17	Adapter bolt	1



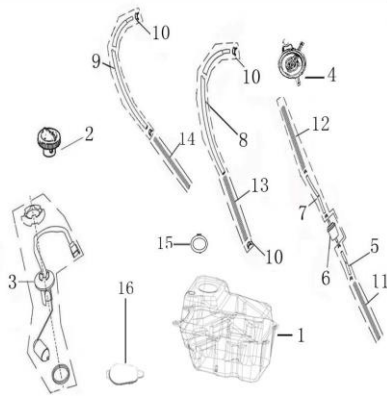
Parts No.	Description	Qty per Vehicel
PMZ150-3-G-1	RIM FR WHEEL (MT2.50*14)	1
PMZ150-3-G-2	TIRE 100/80-14	1
PMZ150-3-G-3	TIRE INFLATOR	1
PMZ150-3-G-4	COLLAR Φ12*Φ20*21	1
PMZ150-3-G-5	FR. WHEEL AXLE M12*250	1
PMZ150-3-G-6	DISK FR BRAKE 230mm	1
PMZ150-3-G-7	Disc brake disc mounting bolt	3
PMZ150-3-G-8	M12NUT U FLANGE 12MM	1
PMZ150-3-G-9	Front wheel counter	1
PMZ150-3-G-10	Wheel speed sensing disk (front)	1
PMZ150-3-G-11	COLLAR Φ12*Φ20*22	1



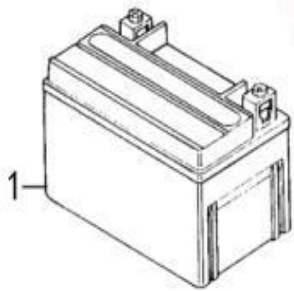
Parts No.	Description	Qty per Vehicel
PMZ150-3-H-1	WHEEL COMP RR CAST MTMT3.50*14	1
PMZ150-3-H-2	TIRE 120/70-14	1
PMZ150-3-H-3	valve	1
PMZ150-3-H-4	DISK RR BRAKE 220mm	1
PMZ150-3-H-5	Rear disc brake disc screw	4
PMZ150-3-H-6	NUT U 16MM	1



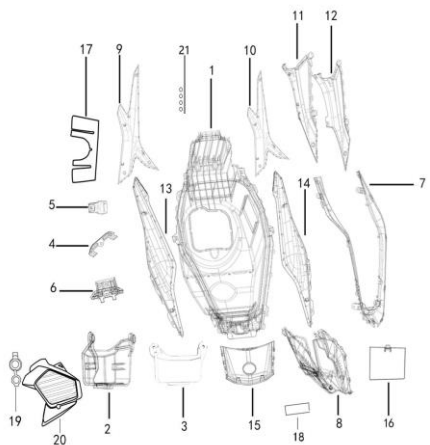
Parts No.	Description	Qty per Vehicel
PMZ150-3-I-1	Seat cushion	1



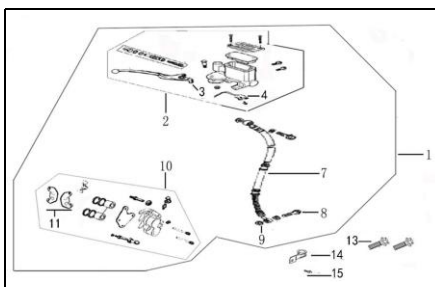
Parts No.	Description	Qty per Vehicel
PMZ150-3-J-1	The fuel tank	1
PMZ150-3-J-2	The cap	1
PMZ150-3-J-3	Oil level sensor assembly	1
PMZ150-3-J-4	The oil pump	1
PMZ150-3-J-5	Oil filter inlet pipe 220mm	0.2
PMZ150-3-J-6	The filter	1
PMZ150-3-J-7	Oil filter flowline 360mm	0.3
PMZ150-3-J-8	Oil pump flowline 490mm	0.53
PMZ150-3-J-9	Negative pressure pipe 650mm	0.53
PMZ150-3-J-10	Steel pickup spring Φ 8.5	8
PMZ150-3-J-11	Spring 200 mm tubing protection	1
PMZ150-3-J-12	Spring 360 mm tubing protection	1
PMZ150-3-J-13	Spring 460 mm tubing protection	1
PMZ150-3-J-14	Spring 460 mm tubing protection	1
PMZ150-3-J-15	Oil tank overflow pad	1
PMZ150-3-J-16	kettle cover	1
PMZ150-3-J-17	Oil tank buffer rubber	1



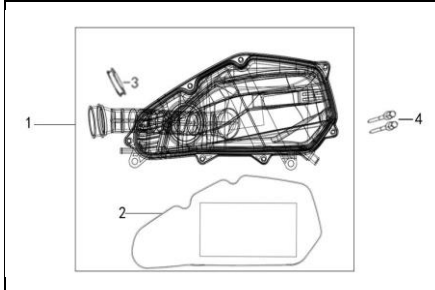
Parts No.	Description	Qty per Vehicle
PMZ150-3-K-1	BATTERY	1



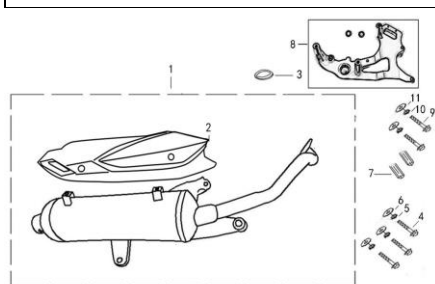
Parts No.	Description	Qty per Vehicle
PMZ150-3-L-1	Toolbox	1
PMZ150-3-L-2	Toolbox lining	1
PMZ150-3-L-3	Tool Box Rocker Arm Cover	1
PMZ150-3-L-4	Toolbox holder	1
PMZ150-3-L-5	Toolbox switch	1
PMZ150-3-L-6	Tool box rocker arm bracket	1
PMZ150-3-L-7	Tail cover lining	1
PMZ150-3-L-8	Tail light lower cover	1
PMZ150-3-L-9black	Left decorative panel	1
PMZ150-3-L-9dark grey	Left decorative panel	1
PMZ150-3-L-10black	Right decorative panel	1
PMZ150-3-L-10dark grey	Right decorative panel	1
PMZ150-3-L-11	Rear of left decorative panel	1
PMZ150-3-L-12	Rear of right decorative panel	1
PMZ150-3-L-13grey	Tail cover left	1
PMZ150-3-L-13yellow	Tail cover left	1
PMZ150-3-L-13white	Tail cover left	1
PMZ150-3-L-14grey	Tail cover right	1
PMZ150-3-L-14yellow	Tail cover right	1
PMZ150-3-L-14white	Tail cover right	1
PMZ150-3-L-15grey	TAIL CAP	1
PMZ150-3-L-15yellow	TAIL CAP	1
PMZ150-3-L-15white	TAIL CAP	1
PMZ150-3-L-16	Maintenance cover on the right side of the seat barrel	1
PMZ150-3-L-17	Water Shield	1
PMZ150-3-L-18	Number Cap	1
PMZ150-3-L-19	Seat cushion lock dust cover	1
PMZ150-3-L-20	Fan cover	1
PMZ150-3-L-21	Decorative board rubber	1



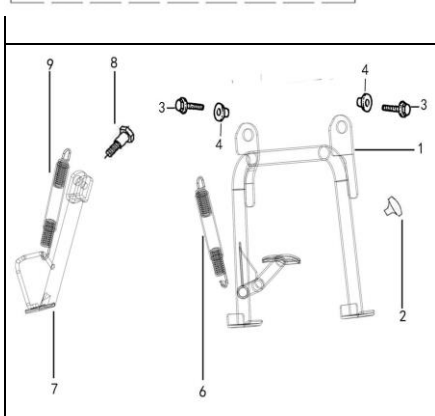
Parts No.	Description	Qty per Vehicle
PMZ150-3-M-1	SUB HARNESS SET RR M/C COMP	1
PMZ150-3-M-2	SUB HARNESS SET RR M/C	1
PMZ150-3-M-3	HANDLE L	1
PMZ150-3-M-4	SHUT-OFF BLOCK CONSTITUTE RR	1
PMZ150-3-M-7	HOSE ASSY RR BRK	1
PMZ150-3-M-8	OIL BOLT 10*22	2
PMZ150-3-M-9	WASHER OIL BOLT	4
PMZ150-3-M-10	Rear disc brake pump	1
PMZ150-3-M-11	Rear disc brake pump brake pad	1SET
PMZ150-3-M-13	BOLT FLANGE 10*40	2
PMZ150-3-M-14	Disc brake pipe clip (long clip)	1
PMZ150-3-M-15	BOLT FLANGE 6*12	1



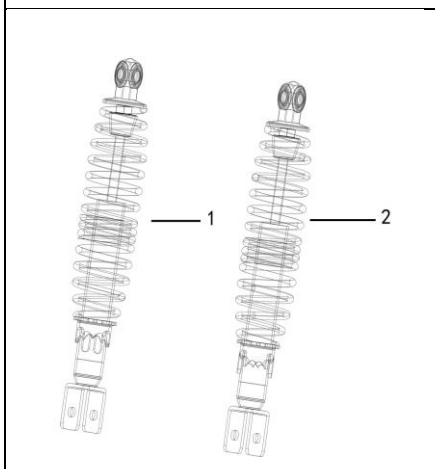
Parts No.	Description	Qty per Vehicle
PMZ150-3-N-1	AIR FILTER ASSY	1
PMZ150-3-N-2	FILTER ELEMENT	1
PMZ150-3-N-3	BAND AIR/C CONNECTING TUBE	1
PMZ150-3-N-4	BOLT FLANGE 6*32	2



Parts No.	Description	Qty per Vehicle
PMZ150-3-O-1	MUFFLER ASSY EXH	1
PMZ150-3-O-1-1	catalysis	1
PMZ150-3-O-2	PROTECTOR MUFFLER	1
PMZ150-3-O-3	Muffler gasket	1
PMZ150-3-O-4	BOLT FLANGE M10*75	3
PMZ150-3-O-5	SPY WANSHW 10MM	3
PMZ150-3-O-6	WANSHW 10MM	3
PMZ150-3-O-7	NUT (HEX) CAP 8MM	2
PMZ150-3-O-8	Connecting plate	1
PMZ150-3-O-9	BOLT FLANGE M10X60	1
PMZ150-3-O-9-1	BOLT FLANGE M10X100	1
PMZ150-3-O-10	SPY WANSHW 10MM	2
PMZ150-3-O-11	WANSHW 10MM	2



Parts No.	Description	Qty per Vehicle
PMZ150-3-P-1	Big support	1
PMZ150-3-P-2	Large brace buffer rubber (hanger rubber)	1
PMZ150-3-P-3	BOLT FLANGE M10*25 (G)	2
PMZ150-3-P-4	COLLAR MAIN STAND	2
PMZ150-3-P-6	SPG D MAIN STAND 95mm	1
PMZ150-3-P-7	Single brace	1
PMZ150-3-P-8	SCREW SIDE STAND PIVOT	1
PMZ150-3-P-9	SPG B1 SIDE STAND 110mm	1



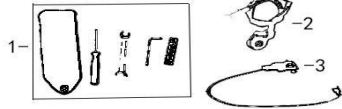
Parts No.	Description	Qty per Vehicle
PMZ150-3-Q-1	Rear shock absorber	1
PMZ150-3-Q-2	Rear shock absorber	1

Parts No.	Description	Qty per Vehicle
PMZ150-3-R-1	THE LEFT TURN SIGNAL	1
PMZ150-3-R-2	RIGHT TURN SIGNAL	1
PMZ150-3-R-3	LED TAIL LAMP ASSEMBLY	1
PMZ150-3-R-4	AFTER THE LEFT TURN SIGNAL	1
PMZ150-3-R-5	RIGHT REAR TURN SIGNAL	1
PMZ150-3-R-6	LED AFTER THE LICENSE PLATE LAMP	1
PMZ150-3-R-7	Rear reflector	1
PMZ150-3-R-8	Rear fender upper cover	1
PMZ150-3-R-9	Rear fender	1
PMZ150-3-R-10	Rear turn signal card	2
MZ150-3-R-6-1	SIDELIGHTS BULB 12V 5W	1
PMZ150-3-R-13	Rear license plate bracket	1
PMZ150-3-R-14	Side reflector	2

Parts No.	Description	Qty per Vehicle
PMZ150-3-S-1	Tank center cover	1
PMZ150-3-S-2	Fuel tank cover	1
PMZ150-3-S-3	Frame web plate	1
PMZ150-3-S-4	Fuel tank outer cover rocker arm bracket	1
PMZ150-3-S-5	Oil tank outer cover pin shaft	1
PMZ150-3-S-6	Fuel Tank Outer Cover Spring Card	1
PMZ150-3-S-7	Fuel tank outer cover locking hook	1
PMZ150-3-S-8	Oil tank outer cover return spring	1
PMZ150-3-S-9	Fuel tank outer cover buffer strip	1
PMZ150-3-S-10	Rear wheel mudguard	1

Parts No.	Description	Qty per Vehicle
PMZ150-3-T-1	HARNESS WIRE	1
PMZ150-3-T-2	CASE FUSE	2
PMZ150-3-T-3	FUSE 15A	4
PMZ150-3-T-4	SET START MAG ASSY	2
PMZ150-3-T-5	lighter	1
PMZ150-3-T-6	COIL ASSY IGN	1
PMZ150-3-T-7	HORN COMP (HIGH)	1
PMZ150-3-T-8	SW COMP LOCK	1
PMZ150-3-T-9	TIE 250mm	5
PMZ150-3-T-10	TIE 150mm	8
PMZ150-3-T-11	RELAY ASSY WINKER	1
PMZ150-3-T-12	Voltage regulator	1
PMZ150-3-T-13	CABLE SEAT LOCK	1
PMZ150-3-T-14	Fuel tank cover cable	1
PMZ150-3-T-15	relay	1

Parts No.	Description	Qty per Vehicle
PMZ150-3-U-1	THE FRAME	1
PMZ150-3-U-2	HANGER	1
PMZ150-3-U-3	Armrest lining bracket	1SET
PMZ150-3-U-4	Armrest liner	4
PMZ150-3-U-5	Panel bracket	1
PMZ150-3-U-6	Tailboard bracket	1
PMZ150-3-U-7	Fuel tank rear bracket	1
PMZ150-3-U-8	Lock plate bracket	1
PMZ150-3-U-10	Rear cable positioning bracket	1
PMZ150-3-U-11	Electrical component bracket	1
PMZ150-3-U-12	pedal	1SET
PMZ150-3-U-13	BOLT FLANGE M12*325	1
PMZ150-3-U-14	BOLT FLANGE M10*195	1
PMZ150-3-U-15	NUT U FLANGE 12MM	1
PMZ150-3-U-16	NUT U FLANGE 10MM	1



Parts No.	Description	Qty per Vehicle
PMZ150-3-V-1	On-board tools	1
PMZ150-3-V-2	Single support flameout switch	1
PMZ150-3-V-3	USB charging interface	1
PMZ150-3-V-4	Engine	1
PMZ150-3-V-5	Full set of decals	1
PMZ150-3-V-6	A full set of standard parts	1SET
PMZ150-3-V-7	Rear armrest	1
PMZ150-3-V-8grey	Tail cover left	1
PMZ150-3-V-8yellow	Tail cover left	1
PMZ150-3-V-8white	Tail cover left	1
PMZ150-3-V-9grey	Tail cover right	1
PMZ150-3-V-9yellow	Tail cover right	1
PMZ150-3-V-9white	Tail cover right	1
PMZ150-3-V-10	frame	1
PMZ150-3-V-11	Rear armrest mounting bracket	1SET
PMZ150-3-V-12	carburetor	1
PMZ150-3-V-13grey	E17.E18.E19.E20.E21.L9.L10.L13.L14.L15.V8.V9	1 set
PMZ150-3-V-13yellow	E17.E18.E19.E20.E21.L9.L10.L13.L14.L15.V8.V9	1 set
PMZ150-3-V-13white	E17.E18.E19.E20.E21.L9.L10.L13.L14.L15.V8.V9	1 set